

## Images in clinical medicine



# Squamous cell carcinoma in kidney with chronic pyelonephritis and pyelonephrosis: a rare case

**Pragyamita Datta**

**Corresponding author:** Pragyamita Datta, Department of Pathology, Jawaharlal Nehru Medical College (DMIHER), Sawangi, Wardha, Maharashtra, India. [pragyamita10@gmail.com](mailto:pragyamita10@gmail.com)

**Received:** 28 Jan 2023 - **Accepted:** 20 Apr 2023 - **Published:** 15 May 2023

**Keywords:** Calculus, kidney, pyelonephritis, squamous cell carcinoma

---

**Copyright:** Pragyamita Datta et al. Pan African Medical Journal (ISSN: 1937-8688). This is an Open Access article distributed under the terms of the Creative Commons Attribution International 4.0 License (<https://creativecommons.org/licenses/by/4.0/>), which permits unrestricted use, distribution, and reproduction in any medium, provided the original work is properly cited.

**Cite this article:** Pragyamita Datta et al. Squamous cell carcinoma in kidney with chronic pyelonephritis and pyelonephrosis: a rare case. Pan African Medical Journal. 2023;45(31). 10.11604/pamj.2023.45.31.39117

**Available online at:** <https://www.panafrican-med-journal.com//content/article/45/31/full>

---

## Squamous cell carcinoma in kidney with chronic pyelonephritis and pyelonephrosis: a rare case

Pragyamita Datta<sup>1,&</sup>

<sup>1</sup>Department of Pathology, Jawaharlal Nehru Medical College (DMIHER), Sawangi, Wardha, Maharashtra, India

**&Corresponding author**

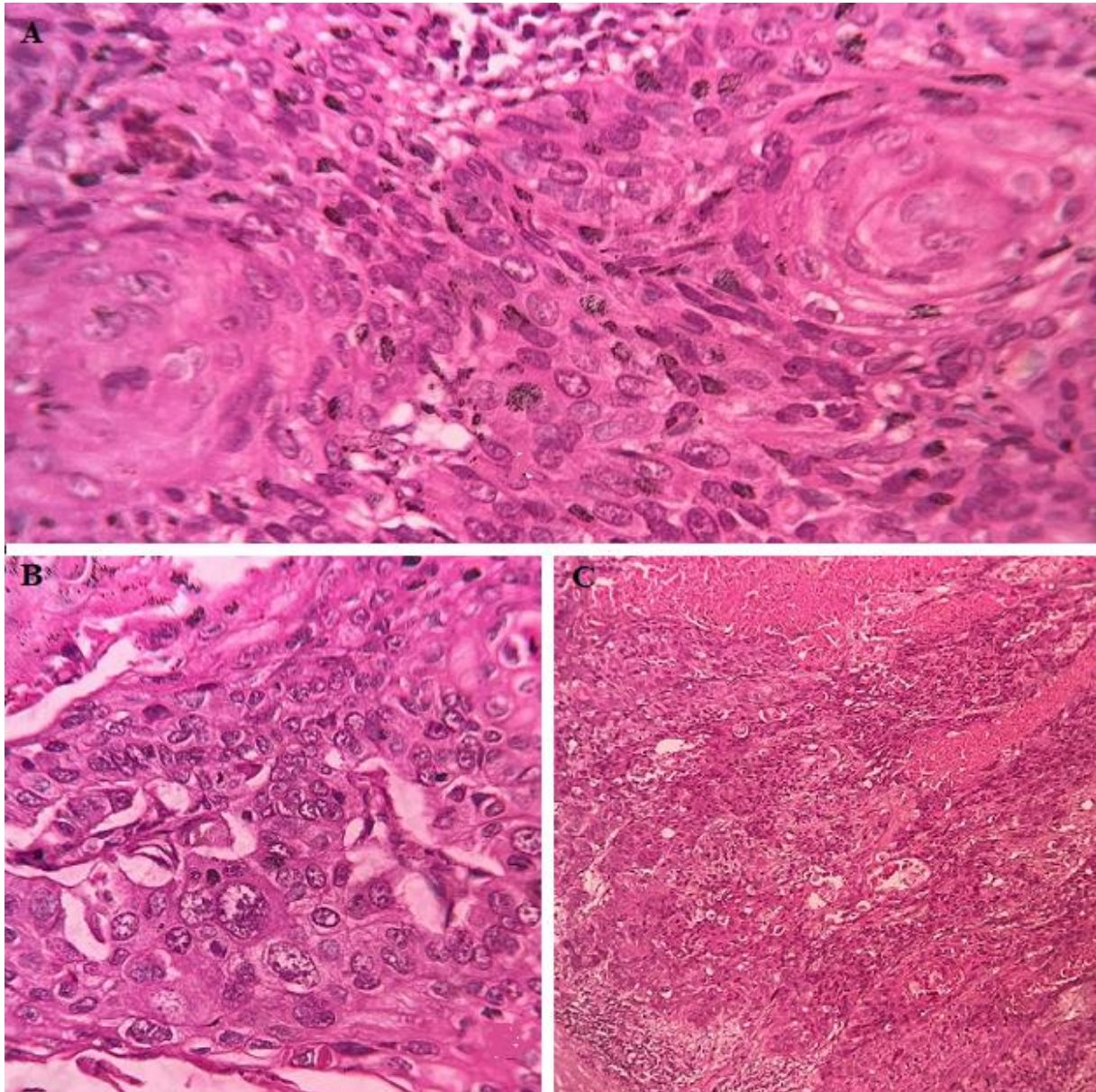
Pragyamita Datta, Department of Pathology, Jawaharlal Nehru Medical College (DMIHER), Sawangi, Wardha, Maharashtra, India

## Image in medicine

Primary squamous cell carcinoma contributes around 0.5 to 15% of all urothelial malignancy. The predisposing factor and causative agents include renal calculi, infection and endogenous and exogenous chemicals, hormonal imbalance and vitamin A deficiency. A 56-year-old female presented with right flank pain on and off with fever for the last one-week duration, imaging study revealed dilated calyx containing pus material, one focus showing a small whitish nodule. On gross examination, there was a complete loss of architecture, and one portion of calyx showed a friable whitish area and one small

nodule measuring 1 x 0.5 cm. Microscopically showing an irregular nest with sheets of malignant

squamous cells, differentiating into keratin pearls and background is traversed stromal invasion.



**Figure 1:** A, B, C) microscopically showing irregular nest and malignant cells arranged in sheet; squamous differentiation showing keratin pearls and background is traversed by stromal invasion