

Research



The validity of the upper limb neurodynamic test 2A in women with a clinical diagnosis of carpal tunnel syndrome: a prospective diagnostic accuracy study

 Hassan Beddaa, Bouchra Kably, Ikrame Mouhi, Basma Marzouk, Abdelghafour Marfak, Said Nafai, Reda Ouazzani,  Nazha Birouk

Corresponding author: Hassan Beddaa, Clinical Research Biostatistics and Epidemiology Laboratory, Faculty of Medicine and Pharmacy, Mohamed V University of Rabat, Rabat, Morocco. hassanbeddaa@gmail.com

Received: 22 Jun 2021 - **Accepted:** 02 May 2022 - **Published:** 23 May 2022

Keywords: CTS, neurodynamic test, sensitivity, specificity, mechanosensitivity, manual therapy, physiotherapy

Copyright: Hassan Beddaa et al. Pan African Medical Journal (ISSN: 1937-8688). This is an Open Access article distributed under the terms of the Creative Commons Attribution International 4.0 License (<https://creativecommons.org/licenses/by/4.0/>), which permits unrestricted use, distribution, and reproduction in any medium, provided the original work is properly cited.

Cite this article: Hassan Beddaa et al. The validity of the upper limb neurodynamic test 2A in women with a clinical diagnosis of carpal tunnel syndrome: a prospective diagnostic accuracy study. Pan African Medical Journal. 2022;42(61). 10.11604/pamj.2022.42.61.30119

Available online at: <https://www.panafrican-med-journal.com//content/article/42/61/full>

The validity of the upper limb neurodynamic test 2A in women with a clinical diagnosis of carpal tunnel syndrome: a prospective diagnostic accuracy study

Hassan Beddaa^{1,&}, Bouchra Kably², Ikrame Mouhi², Basma Marzouk², Abdelghafour Marfak³, Said Nafai⁴, Reda Ouazzani², Nazha Birouk²

¹Clinical Research Biostatistics and Epidemiology Laboratory, Faculty of Medicine and Pharmacy, Mohamed V University of Rabat, Rabat, Morocco,

²Clinical Neurophysiology Department, Specialty Hospital, Ibn Sina University Hospital Center, Mohamed V University of Rabat, Rabat, Morocco,

³National School of Public Health, Rabat, Morocco,

⁴Division of Occupational Therapy, School of Health Sciences, American International College, USA

&Corresponding author

Hassan Beddaa, Clinical Research Biostatistics and Epidemiology Laboratory, Faculty of Medicine and Pharmacy, Mohamed V University of Rabat, Rabat, Morocco

Abstract

Introduction: the validity of the upper limb neurodynamic tests and especially the upper limb neurodynamic test 1 for diagnosing carpal tunnel syndrome has been the subject of several previous studies. However, the upper limb neurodynamic test 2A, which is also a test designated to assess the mechanosensitivity of the median nerve, has not been sufficiently studied, particularly for the diagnosis of carpal tunnel syndrome. **Methods:** we used the upper limb neurodynamic test 2A as the index test and nerve conduction studies as the reference standard. We considered the upper limb neurodynamic test 2A positive according to Nee *et al.* criteria. Sensitivity, specificity, positive likelihood, and negative likelihood were calculated. In addition, a receiver operating characteristics analysis was carried out. **Results:** ninety-four women (188 hands) suspected of carpal tunnel syndrome with a mean age of 48.87 years and SD of 12.09 participated in the study. The sensitivity of the upper limb neurodynamic test 2A was estimated at 73.4%, the specificity at 47%, the positive likelihood ratio was 1.38, the negative likelihood ratio was 0.57, and the Kappa agreement was 20.3%, and the area under the curve 60.1%. **Conclusion:** the upper limb neurodynamic test 2A does not seem to have value in the diagnosis of carpal tunnel syndrome when compared to nerve conduction studies. It could be alternatively used to detect an increased mechanosensitivity of the median nerve when the upper limb neurodynamic test 1 cannot be performed in case of a range of motion limitation of the shoulder abduction.

Introduction

Carpal tunnel syndrome (CTS), a localized compression of the median nerve at the wrist, consists of a combination of symptoms such as hand pain, numbness, tingling, and burning in the distal distribution of the median nerve [1]. It is considered the most common nerve entrapment affecting the upper limb. Its prevalence was

estimated at 3.8% in the general population, whereas 5.8% was confirmed by NCS [2,3]. Several studies have shown that it is more frequent in the female population and associated with repetitive handwork and extreme wrist posture [4,5]. Functional limitations regarding daily activities, absenteeism from work, and the cost of managing this condition are parts of the socio-economic impact of this disorder [6,7]. The diagnosis of CTS is based on history, physical examination, ultrasound, and Nerve Conduction Studies (NCS) [8,9]. NCS are still considered the reference standard for diagnosing CTS because of its high sensitivity and specificity [8]. In addition, many studies were conducted to explore the value of ultrasound in diagnosing CTS. The results showed its usefulness in the case of negative NCS findings in patients with CTS clinical presentation [10,11].

Furthermore, several median nerve provocation tests such as Phalen, Reverse Phalen, and Tinel are commonly used to highlight CTS symptoms. They have shown conflicting results for the diagnosis of this condition, though [12]. Because of this, several previous studies tried to evaluate the validity of the Upper Limb Neurodynamic Tests (ULNTs) and particularly ULNT1 for the diagnosis of CTS. Indeed, ULNTs were recommended for the diagnosis of CTS as well as other neuropathic pain conditions in departments and areas with limited access to NCS [13]. Clinicians use neurodynamic tests to determine peripheral nerve disorders. They are designed to put mechanical stress on the neural tissue and assess its mechanosensitivity changes, which refers to the pain resulting from neural structures during their mobility or posture [14]. Consequently, positive and negative signs and symptoms might occur during a neurodynamic test showing abnormal excitability of the nervous system, as demonstrated by Jaberzadeh *et al.* in 2013 for ULNT1 in patients with chronic CTS.

Many studies have tried to assess the accuracy of ULNTs for the diagnosis of CTS to expand the range of used tests [15-18]. They have indeed shown results encouraging their use. However, the

majority of these studies were only interested in ULNT1. Moreover, the performance of this test requires a sufficient Range Of Motion (ROM) of the different joints crossed by the nerve and especially a shoulder abduction of 110°[19,20]. Despite its clinical relevance, the test cannot be performed when this mobility cannot be achieved. That is why ULNT2A, which is also a neurodynamic test for the median nerve that only requires an abduction of the shoulder of 30° to 40° [21], can represent a good alternative when impossible to carry out ULNT1 because of a decreasing ROM of the shoulder joint. This study aims to determine the validity of the ULNT2A in women with a clinical diagnosis of CTS.

Methods

Ethical considerations: the study was authorized by the Biomedical Research Ethics Committee at the Faculty of Medicine and Pharmacy of Rabat, part of Mohammed V University, on December 20th, 2018 (Decision No. 13/19). All participants were informed about the study aims and that they could withdraw at any time without giving any reason. All the participants gave their written consent to participate in the study.

Study design: a prospective diagnostic accuracy study. The data collection was planned previously. The ULNT2A was used as the index test and the NCS as the reference standard. This study lasted 12 months between November 2019 and November 2020.

Examiners: the team was composed of four examiners, two physicians (history and clinical examination), one physiotherapist (ULNT2A, ROM of the shoulder and neck), and a neurophysiologist (NCS).

Subjects: participants with suspected CTS were referred to the clinical neurophysiology department of Rabat Specialty Hospital (RSH), Morocco, to undergo NCS. They were voluntarily recruited at this department to participate in this study. The inclusion criteria were: patients aged >

18 years with suspected CTS and referred by their physicians for NCS. The exclusion criteria were: Age < 18 years, and any ROM limitation in the upper limbs that could limit a correct performance of the ULNT2A. Inflammatory, systemic, infectious conditions or history of fracture that may influence ULNTs. History of surgical intervention for CTS, Cervical Radiculopathy (CR), cognitive or behavioral deficits that may prevent the participants from giving correct feedback during the ULNT2A test. A flow diagram illustrating the study design according to the Standards for Reporting of Diagnostic Accuracy [22] is provided in Figure 1.

Tests Methods: after completing the consent form, general information (Demographic, current and previous medical and surgical history, location, occupation) was collected by a physician using a form prepared for this purpose. Another physician performed the Spurling's and the neck distraction test to rule out participants who might have CR once symptoms could be similar to those of CTS, according to Wainner *et al.* in 2003 [23]. A physiotherapist who had 16 years of experience in physiotherapy performed passive ROM of the upper limbs and the neck to check any joint stiffness that might prevent the performance of ULNT2A. Participants were given 25 minutes of rest before performing ULNT2A to reduce median nerve sensitization after NCS. Before ULNT2A, participants have been instructed to signal the onset of symptoms by saying "stop" and how to communicate symptoms and any sensation (numbness, tingling, burning, hypoesthesia...). So, they were trained to say "worse", "better", or "the same" with the SD maneuver symptoms changes.

The ULNT2A was performed as described by Butler (1991). Participants were positioned diagonally in supine, the head close to the edge of the plinth, without a pillow, and the lumbar spine in a neutral position with the knees extended and the lower limb straight. The other upper limb was positioned in a neutral position. At first, the ULNT2A was carried out on the unaffected or less affected upper limb and then on the affected or more

affected one until the participants' symptoms were reproduced or until the end of the available ROM. If the symptoms were provoked, the limb movement sequence was stopped. The physiotherapist maintained this position then the SD maneuver was performed (by an active contralateral and ipsilateral lateral flexion of the participants' neck). Each examiner was blinded to the results collected by the other examiners, and participants were also unaware of NCS findings.

Diagnostic criteria: the ULNT2A was considered positive, according to Nee *et al.* criteria [24] which means if participants had at least a partial reproduction of their symptoms and a positive SD maneuver (contralateral neck lateral flexion increased symptoms and ipsilateral neck lateral flexion decreased symptoms).

Reference standard: NCS are still the reference standard for diagnosing CTS [8]. Furthermore, since the hand's temperature can influence the results [25], participants were asked to warm their hands with an electric heater in a room near the examination room before performing NCS. Afterward, an experienced neurophysiologist with 20 years' experience carried out NCS in a heated room, according to the protocol adopted by the clinical neurophysiology department of the RSH, which corroborated the AAEM recommendations [8].

Statistical analysis: the data were recorded in an electronic database, ensuring the confidentiality and anonymity of the participants. The sample characteristics and symptoms were summarized by proportion, mean and standard deviation. Statistical analysis compared positive ULNT2A with the CTS case definition to estimate the test's diagnostic accuracy. So, sensitivity, specificity, Positive Likelihood Ratio (PLR), Negative Likelihood Ratio (NLR), and their 95% confidence intervals were calculated using a two-by-two contingency table. Additionally, a receiver operating characteristics (ROC) curve analysis, a ROC curve, and an area under the curve (AUC) were carried

out. All statistical analysis was performed using SPSS v.20 software.

Funding: the authors confirm that they have no affiliation or financial interest with any organization or entity that directly interests the subject matter or material discussed in the article.

Results

General characteristics

Our sample consisted initially of 106 participants, 104 women and 02 men, who were referred to the clinical neurophysiology department of the RSH between November 2019 and November 2020 for NCS. Twelve subjects were excluded from the study (2 participants because of CR, 7 participants for systemic diseases, 3 participants for ROM restriction of the upper limb). Consequently, 94 participants (188 hands) were enrolled in the study during the previously decided recruitment period. Therefore, our sample size appears reasonable compared to those identified and discussed in the current study, with a mean of 71 patients (minimum $n=47$ and maximum $n=120$ patients). Participants' ages ranged from 18 to 78 years, with a mean of 48.87 years and SD of 12.09. The sample was composed of women (100%; 40% were housewives with many hand tasks (cleaning, baking, washing). About 31% of the employed participants were blue-collar. Chronic symptoms lasting more than three months were reported in 98% of cases (Table 1).

Diagnostic accuracy of the ULNT2A

According to Nee *et al.* criteria and NCS findings based on the case definition, the results found are illustrated in Table 2. From the 188 evaluated hands, 124 showed abnormal NCS findings. However, the ULNT2A showed 33 false-negative tests. This study estimated the sensitivity of the ULNT2A at 73.4%, 95% Confidence interval [CI]: [0.62-0.84]; the specificity at 47%; CI: [0.17-0.78], a PLR of 1.38; CI: [1.12-1.65], a NLR of 0.57; CI: [0.21-1.15], a Kappa agreement of 20.3% ($P =$

0.05), and an AUC of 60.1%; 95% CI: [0.51- 0.69] (P = 0.02). The ROC curve is provided in Figure 2.

Discussion

This study aimed to assess the validity of ULNT2A for the diagnosis of CTS in women with a clinical presentation of this disorder. The mean age of the women who took part in the study was 48.87 years, with a standard deviation of 12.09, and 98% of them had symptoms that lasted more than three months. The ULNT2A's sensitivity was estimated at 73.4%, the specificity at 47%, a PLR of 1.38, and a NLR of 0.57 in terms of test validity. Furthermore, the Kappa agreement was 20.3% which means that there is just a slight agreement between the ULNT2A and the NCS, and an AUC of 60.1%, which gives the ULNT2A a poor clinical value for diagnosing CTS.

To our knowledge, the current study is the first to assess the validity of the ULNT2A test for the diagnosis of CTS in women in the past ten years. Previous studies have all attempted to investigate the validity of the ULNT1 test in diagnosing CTS. As the two tests are designated for the median nerve with a difference in sequence and ROM [20,26], it seemed logical to compare the results of this study with the results of studies on the validity of the ULNT1 test. However, it should be remembered that comparison may seem difficult because previous studies did not all use the same criteria to define a positive ULNT. In this study, the Nee *et al.* criteria were used [24]. These authors insisted that the test should at least partially reproduce the patient's symptoms and that they change with the SD maneuver. The same study concluded that the ROM difference of 10 degrees or more between the two sides in the elbow extension or completion of all movement sequences is not a valid criterion for defining a positive ULNT as in Wainner's criteria used for several previous studies [16,27,28].

On the other hand, the reference standard used for this study is the same as in previous studies. Although it only explores large diameter fibers

that are not always abnormal in the case of CTS [28], it is still recommended by the AEEM to detect positive cases of CTS because of its very high sensitivity and specificity [8]. It is also important to say that it measures a different dimension of neuropathy (Conduction velocity) than ULNTs (Mechanosensitivity). Our sample size approaches that of Trillos *et al.* (2018) and is more important than the other studies [15,17,18]. Indeed, the clinical neurophysiology department of the RSH receives participants from different regions of Morocco and not only from Rabat, given the clinical expertise of its staff which could explain the size of the study sample. The other sample data (gender, age, chronicity of symptoms, and overuse of body movements) appear similar to those of other studies. The characteristics of our sample could reflect the epidemiology of CTS in the general population.

Our study findings concerning the ULNT2A accuracy corroborate those of Gracia *et al.* (2016) with their criterion B, which consists of the onset of symptoms in the wrist and the first three digits and change during SD, who estimated the sensitivity at 74%, specificity at 50%, a PLR of 1.47 and a NLR of 0.53. Wainner *et al.* in 2005 had a similar sensitivity of 75% but a lower specificity of 13% and NLR of 1.9 than the present study. On the other hand, the studies of Trillos *et al.* in 2018 and of Vanti *et al.* in 2011, which were based on Wainner's criteria to define a positive test, showed higher sensitivity, respectively, of 93% and 91.67%, but lower specificity than our study with 6.67% and 15% respectively. They have also estimated PLR at 1.04 and 1.07, while NLR was estimated at 1.00 and 0.55, respectively. However, the very liberal Wainner's criteria could explain this increased sensitivity. Only a 10° difference in mobility of elbow extension between the two sides or reproduction of the patient's symptoms is sufficient to consider the test to be positive for Wainner's criteria. Thus, it appears that our study showed a good NLR compared to other studies [16,18,27] Table 3. We should emphasize that 92 participants (98%) in the present study had chronic CTS with symptoms lasting more than

three months. So, our results have to be considered in symptomatic CTS with disease duration exceeding at least three months rather than in patients with potential CTS. On the other hand, it is a reality that CTS is more prevalent among women, and it is well documented in the literature. However, patient's recruitment did not consider gender as a criterion for inclusion or exclusion. Thus, it should be mentioned that out of the total duration of the study, there were only two men who were excluded because of the exclusion criteria. Therefore, the results of this study can only be applied to women. Furthermore, it would have been desirable for the results of this study to be compared with other studies on the validity of ULNT2A in diagnosing CTS. Since such studies could not be found, the decision was made to compare them with studies concerning the validity of ULNT1 for the diagnosis of CTS, as the two tests are designated for the median nerve.

Conclusion

Because of the very low specificity of the test, the large uncertainties in the confidence intervals of sensitivity and likelihood ratios, the weak Kappa agreement, and the area under the curve value, the ULNT2A does not seem to have a value for the diagnosis of CTS in women when compared to NCS. However, it could help physical therapists, occupational therapists, and other concerned health care workers to detect an increased mechanosensitivity in the median nerve, especially in environments where access to NCS is limited.

What is known about this topic

- *The validity of ULNT2A for the diagnosis of carpal tunnel syndrome was not sufficiently studied;*
- *The prevalence of carpal tunnel syndrome is higher in women compared to men.*
- *Both ULNT1 and ULNT2A are designed to put mechanical stress on the median nerve and assess its mechanosensitivity.*

What this study adds

- *The upper limb neurodynamic test 2A has a low to moderate value for diagnosing carpal tunnel syndrome in women;*
- *The diagnostic value of the upper limb neurodynamic test 2A is close to that of the upper limb neurodynamic test 1 when compared;*
- *The upper limb neurodynamic test 2A could represent an alternative to the upper limb neurodynamic test 1 in case of shoulder mobility restriction.*

Competing interests

The authors declare no competing interests.

Authors' contributions

HB conceived the study, performed the ULNT2A, measured the shoulder and neck ROM, and wrote the first draft of the manuscript. AM analyzed the data. IM and BM completed the patients' history and physical examinations. SN proofread the manuscript. NB performed NCS, and their interpretations supervised the study methods and proofread the manuscript. All the authors read and approved the final version of the manuscript.

Acknowledgments

We want to thank the staff of the clinical neurophysiology department of the Rabat Specialty Hospital for their precious help in conducting this study.

Tables and figures

Table 1: characteristics of the sample

Table 2: upper limb neurodynamic test 2A cross-tabulation results compared with nerve conduction test

Table 3: the validity of ULNT1 and ULNT2A for diagnosing CTS

Figure 1: flow chart of the study according to the standards for reporting of diagnostic accuracy

Figure 2: the receiver operating characteristics curve

References

1. Werner RA, Andary M. Carpal tunnel syndrome: pathophysiology and clinical neurophysiology. *Clin Neurophysiol.* 2002;113(9): 1373-8. **PubMed** | **Google Scholar**
2. De Krom MCTFM, Knipschild PG, Kester ADM, Thijs CT, Boekkooi PF, Spaans F. Carpal tunnel syndrome: Prevalence in the general population. *J Clin Epidemiol.* 1992;45(4): 373-6. **Google Scholar**
3. Papanicolaou GD, McCabe SJ, Firrell J. The prevalence and characteristics of nerve compression symptoms in the general population. *J Hand Surg Am.* 2001;26(3): 460-6. **PubMed** | **Google Scholar**
4. You D, Smith AH, Rempel D. Meta-analysis: Association between wrist posture and carpal tunnel syndrome among workers. *Saf Health Work.* 2014;5(1): 27-31. **PubMed** | **Google Scholar**
5. GUERRIER M. Chirurgie du syndrome du canal carpien?: approche multidimensionnelle pour une décision pertinente. *HAS Serv évaluation des actes Prof.* 2012;11-6. **PubMed** | **Google Scholar**
6. Fernández-de-las-Peñas C, Fernández-Muñoz JJ, Palacios-Ceña M, Navarro-Pardo E, Ambite-Quesada S, Salom-Moreno J. Direct and Indirect Effects of Function in Associated Variables Such as Depression and Severity on Pain Intensity in Women with Carpal Tunnel Syndrome. *Pain Med (United States).* 2015;16(12): 2405-11. **PubMed** | **Google Scholar**
7. Saint-Lary O, Rébois A, Mediouni Z, Descatha A. Carpal tunnel syndrome: Primary care and occupational factors. *Front Med.* 2015;2(MAY): 1-4. **PubMed** | **Google Scholar**
8. Jablecki CK, Andary MT, Floeter MK, Miller RG, Quartly CA, Vennix MJ *et al.* Practice parameter: Electrodiagnostic studies in carpal tunnel syndrome: Report of the American Association of Electrodiagnostic Medicine, American Academy of Neurology, and the American Academy of Physical Medicine and Rehabilitation. *Neurology.* 2002;58(11): 1589-92. **PubMed** | **Google Scholar**
9. Atroshi I, Gummesson C, Johnsson R, Ornstein E, Ranstam J, Rosén I. Prevalence of carpal tunnel syndrome in a general population. *J Am Med Assoc.* 1999;282(2): 153-8. **PubMed** | **Google Scholar**
10. Koyuncuoglu HR, Kutluhan S, Yesildag A, Oyar O, Guler K, Ozden A. The value of ultrasonographic measurement in carpal tunnel syndrome in patients with negative electrodiagnostic tests. *Eur J Radiol.* 2005;56(3): 365-9. **PubMed** | **Google Scholar**
11. Rahmani M, Ghasemi Esfe AR, Bozorg SM, Mazloumi M, Khalilzadeh O, Kahnouji H. The ultrasonographic correlates of carpal tunnel syndrome in patients with normal electrodiagnostic tests. *Radiol Medica.* 2011;116(3): 489-96. **PubMed** | **Google Scholar**
12. Aroori S, Spence RAJ. Carpal tunnel syndrome. *Ulster Med J.* 2008;77(1): 6-17. **PubMed** | **Google Scholar**
13. Keith MW, Masear V, Chung KC, Maupin K, Andary M, Amadio PC *et al.* American Academy of Orthopaedic Surgeons Clinical Practice Guideline on. *J Bone Jt Surgery-American Vol.* 2009;91(10): 2478-9. **PubMed** | **Google Scholar**
14. Jaberzadeh S, Zoghi M. Mechanosensitivity of the median nerve in patients with chronic carpal tunnel syndrome. *J Bodyw Mov Ther.* 2013;17(2): 157-64. **PubMed** | **Google Scholar**
15. Bueno-Gracia E, Tricás-Moreno JM, Fanlo-Mazas P, Malo-Urriés M, Haddad-Garay M, Estébanez-de-Miguel E *et al.* Validity of the Upper Limb Neurodynamic Test 1 for the diagnosis of Carpal Tunnel Syndrome: the role of structural differentiation. *Man Ther.* 2016 Apr;22: 190-5. **PubMed** | **Google Scholar**

16. Trillos M-C, Soto F, Briceno-Ayala L. Upper limb neurodynamic test 1 in patients with clinical diagnosis of carpal tunnel syndrome: A diagnostic accuracy study. *J Hand Ther.* Jul-Sep 2018;31(3): 333-338. **PubMed** | **Google Scholar**
17. Vanti C, Bonfiglioli R, Calabrese M, Marinelli F, Violante FS, Pillastrini P. Relationship Between Interpretation and Accuracy of the Upper Limb Neurodynamic Test 1 in Carpal Tunnel Syndrome. *J Manipulative Physiol Ther.* 2012 Jan;35(1): 54-63. **PubMed** | **Google Scholar**
18. Vanti C, Bonfiglioli R, Calabrese M, Marinelli F, Guccione A, Violante FS *et al.* Upper limb neurodynamic test 1 and symptoms reproduction in carpal tunnel syndrome: a validity study. *Man Ther.* 2011 Jun;16(3): 258-63. **PubMed** | **Google Scholar**
19. Shacklock M. Neurodynamics. *Physiotherapy.* 1995;81(1): 9-16. **PubMed** | **Google Scholar**
20. Butler D. Mobilisation of the nervous system. Stockholm: Churchill Livingstone Inc. 1991. **PubMed** | **Google Scholar**
21. Reisch R, Williams K, Nee RJ, Rutt RA. ULNT2 - Median Nerve Bias?: Examiner Reliability and Sensory Responses in Asymptomatic Subjects. *Journal of Manual & Manipulative Therapy.* 2005;13(1): 44-55. **PubMed** | **Google Scholar**
22. Bossuyt PM, Reitsma JB, Bruns DE, Gatsonis CA, Glasziou PP, Irwig LM *et al.* Toward complete and accurate reporting of studies of diagnostic accuracy: The STARD initiative. *Am J Clin Pathol.* 2003;119(1): 18-. **PubMed** | **Google Scholar**
23. Wainner RS, Fritz JM, Irrgang JJ, Boninger ML, Delitto A, Allison S. Reliability and diagnostic accuracy of the clinical examination and patient self-report measures for cervical radiculopathy. *Spine (Phila Pa 1976).* 2003;28(1): 52-62. **PubMed** | **Google Scholar**
24. Nee RJ, Jull GA, Vicenzino B, Coppieters MW. The Validity of Upper-Limb Neurodynamic Tests for Detecting Peripheral Neuropathic Pain. *J Orthop Sports Phys Ther.* 2012 May;42(5): 413-24. **PubMed** | **Google Scholar**
25. Denys EH. AAEM minimonograph #14: The influence of temperature in clinical neurophysiology. *Muscle Nerve.* 1991;14(9): 795-811. **PubMed** | **Google Scholar**
26. Shacklock M. Improving application of neurodynamic (neural tension) testing and treatments: A message to researchers and clinicians. *Manual Therapy.* 2005;(10): 175-9. **PubMed** | **Google Scholar**
27. Wainner RS, Fritz JM, Irrgang JJ, Delitto A, Allison S, Boninger ML. Development of a clinical prediction rule for the diagnosis of carpal tunnel syndrome. *Arch Phys Med Rehabil.* 2005;86(4): 609-18. **PubMed** | **Google Scholar**
28. Schmid AB, Bland JDP, Bhat MA, Bennett DLH. The relationship of nerve fibre pathology to sensory function in entrapment neuropathy. *Brain.* 2014;137(12): 3186-99. **PubMed** | **Google Scholar**

Table 1: characteristics of the sample

Characteristics of participants	Overall (n=94)
No. females (%)	94 (100%)
Age (years), mean (SD)	48.87 (12.09)
Height (m), mean (SD)	1.60 (0.06)
Weight (Kg), mean (SD)	70.67 (14.17)
BMI (Kg/m²)	27.46 (5.22)
No. occupation (%)	
Blue-collar	29 (31%)
White-collar	3 (3%)
Housewives' with hand activities	38 (40%)
Not employed	24 (26%)
No. symptoms duration (%)	
<1 month	1 (1%)
1-3 months	1 (1%)
>3 months	92 (98%)
SD: Standard deviation; BMI: Body Mass Index	

Table 2: upper limb neurodynamic test 2A cross-tabulation results compared with nerve conduction test

Test	Nerve conduction test			
		Positive	Negative	Total
Upper Limb Neurodynamic Test 2A	Positive	91	34	125
	Negative	33	30	63
	Total	124	64	188

Table 3: the validity of ULNT1 and ULNT2A for diagnosing CTS

Study, year	Test	Sample size	Criteria	Sensitivity	Specificity	Positive LR	Negative LR
Wainner RS et al. 2005	ULNT1	n=82	Wainner's criteria	75% (0.58-0.92)	13% (0.04-0.22)	0.86 (0.67-1.1)	1.9 (0.72-5.1)
Vanti C et al. 2011	ULNT1	n=47	Wainner's criteria	91.67% (0.741-0.977)	15% (0.052-0.360)	1.0784 (0.377-3.083)	0.5556 (0.194-1.588)
Vanti C et al. 2011	ULNT1	n=47	Reproduction of symptoms 1 st , 2 nd or 3 rd digit	54.17% (0.351-0.721)	70% (0.481-0.854)	1.8056 (1.132-2.879)	0.6548 (0.411-1.044)
Vanti, C et al. 2012	ULNT1	n=47	Reproduction of symptoms 1 st , 2 nd or 3 rd digit	40% (0.256-0.564)	79.59% (0.664-0.885)	1.96 (1.275-3.012)	0.7538 (0.490-1.159)
Bueno-Gracia E et al. 2016	ULNT1	n=58	Reproduction of patient symptoms during the test and change with SD	58% (0.45-0.71)	84% (0.72-0.96)	3.67 (1.70-7.89)	0.5 (0.36-0.70)
Bueno-Gracia E et al. 2016	ULNT1	n=58	symptoms appear at the wrist or the first three digits of the affected hand and change during SD	74% (0.61-0.83)	50% (0.35-0.65)	1.47 (1.03-2.10)	0.53 (0.31-0.90)
Trillos, MC et al. 2018	ULNT1	n=120	Wainner's criteria	93% (88.21-96.79)	6.67% (0.0-33.59)	1 (0.90-1.10)	1.05 (0.25-4.89)
Our study	ULNT2A	n=94	Reproduction, at least partially, of the patient's symptoms and change with SD	73.40% (0.62-0.84)	47.00% (0.17-0.78)	1.38 (1.12-1.65)	0.57 (0.21-1.15)

ULNT1: Upper Limb Neurodynamic Test 1 ; ULNT2A: Upper Limb Neurodynamic Test 2A; CTS: Carpal Tunnel Syndrome; SD: Structural Differentiation; (95% confidence interval)

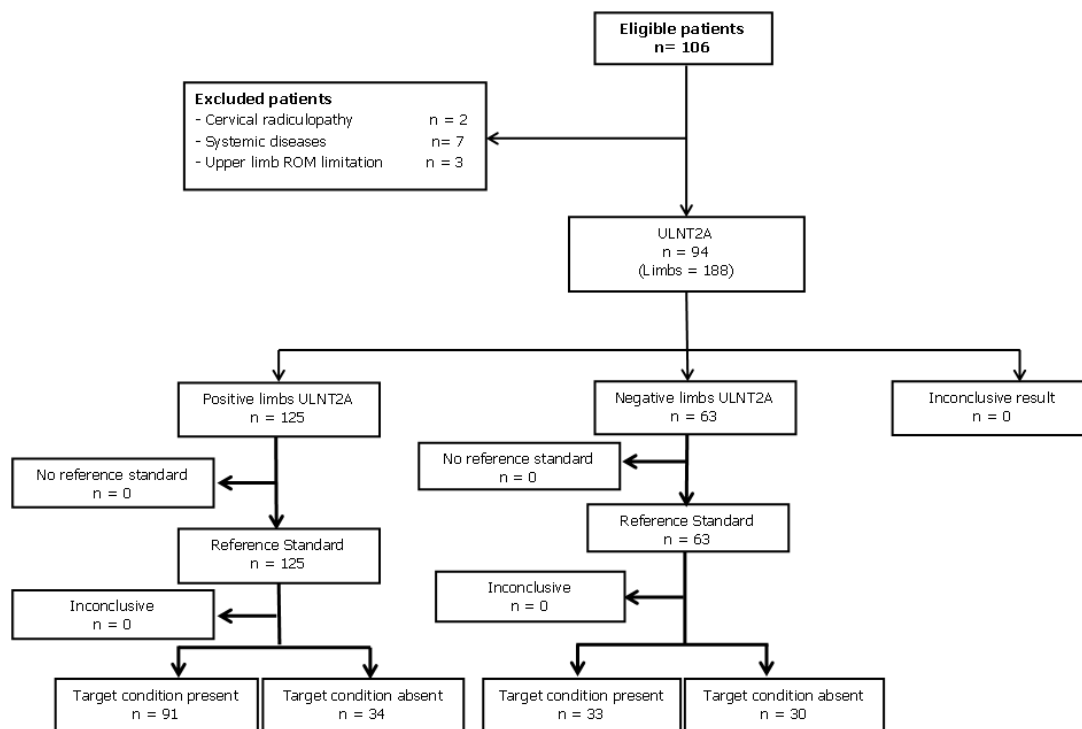


Figure 1: flow chart of the study according to the standards for reporting of diagnostic accuracy

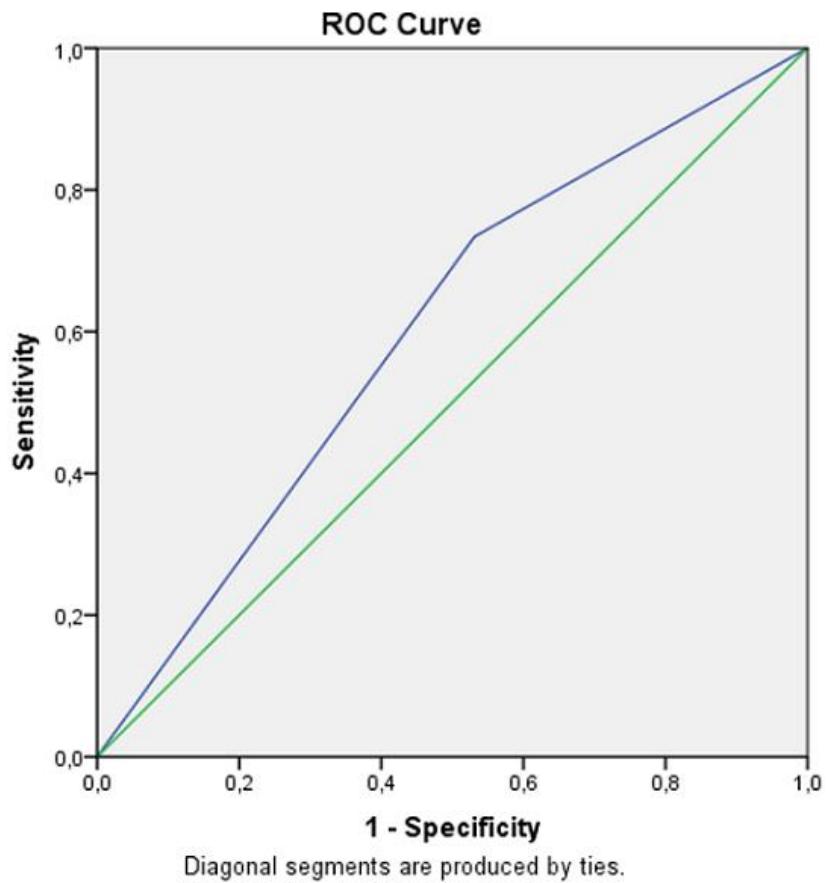


Figure 2: the receiver operating characteristics curve