

Images in clinical medicine

Water bottle sign of pericardial effusion on chest radiograph

Yee Li Xien, Sarvesh Seger

Corresponding author: Yee Li Xien, School of Medicine, International Medical University, Clinical Campus Kluang, Kluang, Johor 86000, Malaysia. hanienmed@gmail.com

Received: 02 Dec 2020 - **Accepted:** 08 Dec 2020 - **Published:** 21 Dec 2020

Keywords: Water bottle, pericardial effusion, chest radiograph

Copyright: Yee Li Xien et al. Pan African Medical Journal (ISSN: 1937-8688). This is an Open Access article distributed under the terms of the Creative Commons Attribution International 4.0 License (<https://creativecommons.org/licenses/by/4.0/>), which permits unrestricted use, distribution, and reproduction in any medium, provided the original work is properly cited.

Cite this article: Yee Li Xien et al. Water bottle sign of pericardial effusion on chest radiograph. Pan African Medical Journal. 2020;37(360). 10.11604/pamj.2020.37.360.27258

Available online at: <https://www.panafrican-med-journal.com//content/article/37/360/full>

Water bottle sign of pericardial effusion on chest radiograph

Yee Li Xien^{1,&}, Sarvesh Seger¹

¹School of Medicine, International Medical University, Clinical Campus Kluang, Kluang, Johor 86000, Malaysia

&Corresponding author

Yee Li Xien, School of Medicine, International Medical University, Clinical Campus Kluang, Kluang, Johor 86000, Malaysia

Image in medicine

A 69-year-old lady diagnosed with congestive cardiac failure three years prior presented with worsening shortness of breath and bilateral leg swelling. She does not have a history of acute coronary syndrome, however an angiogram performed two years ago revealed a two-vessel disease. She also has hypothyroidism secondary to thyroidectomy. A cardiovascular examination revealed a raised jugular venous pulsation, displaced apex beat, muffled heart sounds, a pan systolic murmur heard loudest at the mitral region with radiation to the axilla and mid inspiratory crepitations over the lung bases with pitting

oedema till the level of the mid-shin. These features are suggestive of an acute decompensation of congestive cardiac failure with mitral regurgitation. Her previous echocardiogram revealed an ejection fraction of 28% with global hypokinesia, dilated left ventricle and severe mitral regurgitation. A chest radiograph was done and revealed a very massive symmetrical cardio

pericardial silhouette. This heart has a globular appearance, a flask or water bottle configuration with relatively smooth left and right cardiac contours. This is characteristic of pericardial effusion. The patient was treated with intravenous diuretics and supplemental oxygen along with the necessary supportive treatment of cardiac failure.

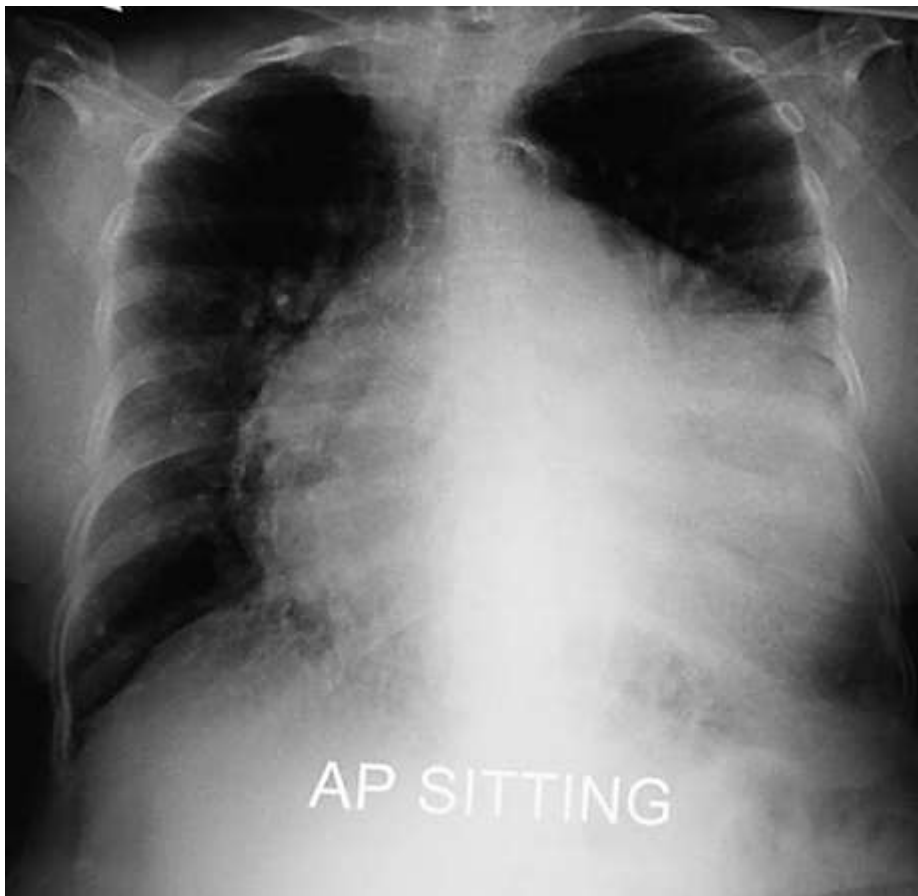


Figure 1: water bottle sign of pericardial effusion