



Images in medicine

Riedel's lobe of the liver

Ahmed Bensaad^{1,&}, Roberto Algaba²

¹CHU Ibn Rochd Casablanca, Morocco, ²Hopitaux Iris Sud Site Josph Bracops Bruxelles, Belgique

[&]Corresponding author: Ahmed Bensaad, CHU Ibn Rochd Casablanca, Morocco

Key words: Riedel's lobe, liver, hepatomegaly

Received: 14/08/2017 - Accepted: 19/08/2017 - Published: 07/11/2017

Pan African Medical Journal. 2017;28:211. doi:10.11604/pamj.2017.28.211.13586

This article is available online at: <http://www.panafrican-med-journal.com/content/article/28/211/full/>

© Ahmed Bensaad et al. The Pan African Medical Journal - ISSN 1937-8688. This is an Open Access article distributed under the terms of the Creative Commons Attribution License (<http://creativecommons.org/licenses/by/2.0>), which permits unrestricted use, distribution, and reproduction in any medium, provided the original work is properly cited.

Image in medicine

We report the case of an 80-year-old woman, presented to our department for an Intestinal obstruction due to postoperative adhesions from an anterior exploratory laparotomy. Preoperative imaging showed a downward elongation of the liver, ending at the level of the iliac crest. Originally reported in 1888 by a German Surgeon named Carl Ludwig Riedel in seven female patients who had palpable masses, they were all confirmed by surgical exploration. The potential complications are rare and include torsion, mass effect morbidity and laparoscopic associated difficulty during different surgical procedures. Unnecessary imaging can be avoided with the knowledge of this normal variant of the right lobe of the liver.

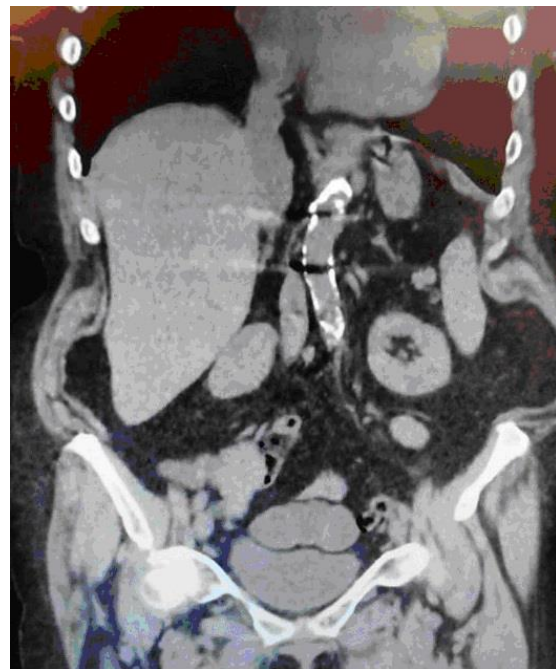


Figure 1: Riedel's lobe of the liver