

Images in medicine

Intracardiac thrombosis in Behçet's disease: a rare complication

Ghita Saghi^{1,&}, Nawal Doghmi¹

¹Cardiologie B, CHU IBN SINA, Rabat, Maroc

[&]Corresponding author: Ghita Saghi, Cardiologie B, CHU IBN SINA, Rabat, Maroc

Key words: Thrombosis, Behçet's disease, pulmonary embolism

Received: 23/03/2013 - Accepted: 21/06/2013 - Published: 09/07/2013

Pan African Medical Journal. 2013; 15:91. doi:10.11604/pamj.2013.15.91.2635

This article is available online at: <http://www.panafrican-med-journal.com/content/article/15/91/full/>

© Ghita Saghi et al. The Pan African Medical Journal - ISSN 1937-8688. This is an Open Access article distributed under the terms of the Creative Commons Attribution License (<http://creativecommons.org/licenses/by/2.0>), which permits unrestricted use, distribution, and reproduction in any medium, provided the original work is properly cited.

Images in medicine

A 13 year-old boy with BD since 2007 was admitted in May 2012 for dyspnea and prolonged fever for 2 months. A physical examination did not reveal signs of heart failure. Transthoracic echocardiography showed a homogeneous mass attached to the right ventricle. We complemented with a magnetic resonance Imaging scan (MRI) that revealed a voluminous, mobile thrombus in the right ventricle and a massive pulmonary embolism. We opted for a conservative treatment: Heparin, oral anticoagulation and Methylprednisolone followed by Prednisone. The outcome was favorable under medical treatment. Cardiovascular disease in Behçet's disease varies from 7 to 29% of reported cases and is represented mainly by endocarditis, pericarditis and myocardial infarction. Intracardiac thrombosis (ICT) is exceptional and can since the first case described at necropsy by Buge in 1977, only about 50 cases of ICT have been reported. The association with pulmonary embolism is serious and life-threatening.

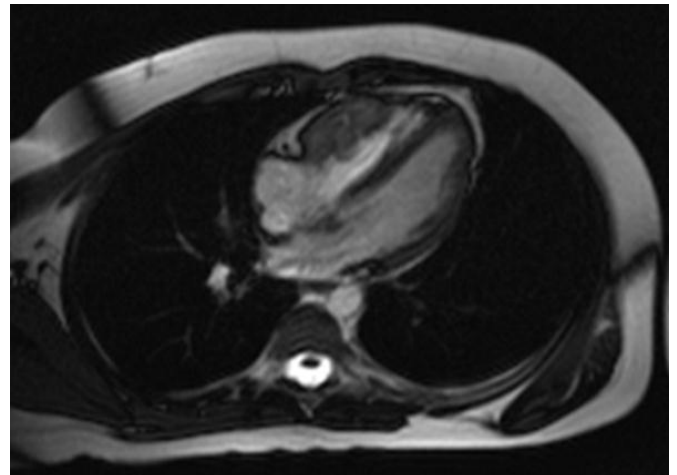


Figure 1: Cardiac magnetic resonance image, heart four chambers view showing right ventricle thrombus (arrow)