



# Images in medicine

## Chilaiditi syndrome

Hicham Naji-amrani<sup>1, &</sup>, Aziz Ouarsrani<sup>1</sup>

<sup>1</sup>Department of Pneumology, Moulay Ismail Military Hospital, Meknes, Morocco

<sup>&</sup>Corresponding author: Hicham Naji-amrani, Department of Pneumology, Moulay Ismail Military Hospital, Meknes, Morocco

Key words: Chilaiditi, colon, subphrenic interposition

Received: 03/01/2017 - Accepted: 07/03/2017 - Published: 07/03/2017

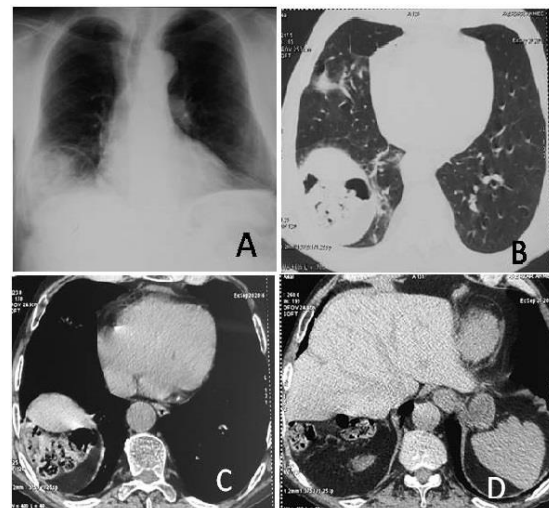
**Pan African Medical Journal. 2017;26:129. doi:10.11604/pamj.2017.26.129.11557**

This article is available online at: <http://www.panafrican-med-journal.com/content/article/26/129/full/>

© Hicham Naji-Amrani et al. The Pan African Medical Journal - ISSN 1937-8688. This is an Open Access article distributed under the terms of the Creative Commons Attribution License (<http://creativecommons.org/licenses/by/2.0>), which permits unrestricted use, distribution, and reproduction in any medium, provided the original work is properly cited.

### Image in medicine

Chilaiditi syndrome or subphrenic interposition of the colon, is a rare condition with an incidence of 0.025% - 0.28% in radiographs and mostly diagnosed as an incidental finding. We report the case of a 67-years-old male, heavy smoker, with history of intermittent abdominal pain, who reported cough and muco-purulent sputum without fever or dyspnea. Physical examination showed bilateral bronchial rales and right hypochondrium sensitivity, his vital signs were normal. A posteroanterior chest films (A) revealed an elevated right hemidiaphragm with free gas below. A pneumoperitoneum, subphrenic abscess, and intestinal pneumatosis were suspected, however, a CT scan of the thorax and abdomen (B, C and D) showed the interposition of the right colon angle between the diaphragm and the liver without any perforated viscus. Our patient was treated for chronic bronchitis infection; otherwise his Chilaiditi syndrome required symptomatic treatment with good outcomes.



**Figure 1:** (A) posteroanterior chest films shows gas under elevated right hemidiaphragm; (B; C and D); CT scan showing the interposition of right colic angle above the liver dome