

Images in medicine

Open lunate enucleation

Monsef El Abdi^{1,&}, Adil Lamkhanter¹

¹Department of Orthopaedic Surgery «1», Military Hospital of Instruction Mohammed V, Rabat, Morocco

[&]Corresponding author: Monsef El Abdi, Department of Orthopaedic Surgery «1», Military Hospital of Instruction Mohammed V, Rabat, Morocco

Key words: Lunate, enucleation, dislocation

Received: 28/03/2015 - Accepted: 22/06/2015 - Published: 20/08/2015

Pan African Medical Journal. 2015; 21:289 doi:10.11604/pamj.2015.21.289.6678

This article is available online at: <http://www.panafrican-med-journal.com/content/article/21/289/full/>

© Monsef El Abdi et al. The Pan African Medical Journal - ISSN 1937-8688. This is an Open Access article distributed under the terms of the Creative Commons Attribution License (<http://creativecommons.org/licenses/by/2.0>), which permits unrestricted use, distribution, and reproduction in any medium, provided the original work is properly cited.

Image in medicine

A 32 year old man, right-handed soldier, was admitted to Emergency Department two hours after undergoing right wrist injury following a 2 meter fall onto the hand, in hyperextension. Clinical examination revealed a deformity of the wrist with an obvious open lunate enucleation (A). The neurovascular status was intact. Standard radiograph of the wrist demonstrated a completely enucleated lunate, associated with scaphoid and radial styloid fracture (B). Computed tomography (CT) scan confirmed diagnosis of trans-radial styloid, trans-scaphoid, perilunate dislocation (C and D). The lunate enucleation was treated by open reduction through a volar approach and internal fixation of associated injuries. Wrist reduction was maintained using K-wires placed through the scapholunate and scaphocapitate. The material was removed after 3 months. The control during one year postoperatively, there was no evidence of complications. The patient had a comfortable range of motion in his right wrist.

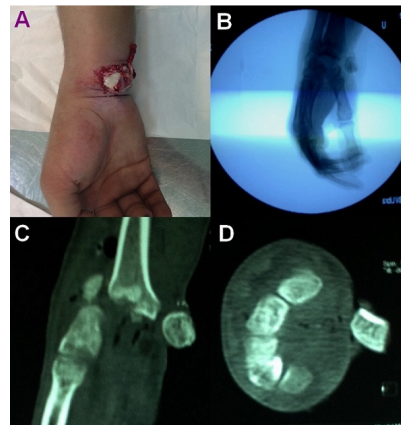


Figure 1: (A) clinical aspect at admission revealing an open enucleation of a carpal bone, (B) X-ray of the left wrist shows a lunate dislocation, (C and D) computed tomography scan (transverse and sagittal cut) shows lunate enucleation with scaphoid and radial styloid fracture