

Images in medicine

Fatal tuberculous brain abscesses in an immunocompetent woman

Hassen Ben Ghezala^{1,*}, Salah Snouda¹

¹Service Universitaire des Urgences et de Réanimation Médicale, Faculté de Médecine de Tunis, Hôpital Régional de Zaghouan, Tunisie

*Corresponding author: Hassen Ben Ghezala, Service Universitaire des Urgences et de Réanimation Médicale, Faculté de Médecine de Tunis, Hôpital Régional de Zaghouan, Tunisie

Key words: Tuberculosis, encephalitis, immunocompetent, intensive care unit

Received: 22/02/2015 - Accepted: 07/04/2015 - Published: 15/04/2015

Pan African Medical Journal. 2015; 20:372 doi:10.11604/pamj.2015.20.372.6404

This article is available online at: <http://www.panafrican-med-journal.com/content/article/20/372/full/>

© Hassen Ben Ghezala et al. The Pan African Medical Journal - ISSN 1937-8688. This is an Open Access article distributed under the terms of the Creative Commons Attribution License (<http://creativecommons.org/licenses/by/2.0>), which permits unrestricted use, distribution, and reproduction in any medium, provided the original work is properly cited.

Image in medicine

The identification of the cause of acute encephalitis is difficult in spite of many developed diagnosis strategies. The cause is unknown in nearly 30 to 40 % of cases. Tuberculosis is endemic in Tunisia. Tuberculous encephalitis is rare in immunocompetent adults. We report in this work a rare case report of tuberculous encephalitis in an immunocompetent woman. She was 38 years old and had no medical history. She had a clinical presentation of mental confusion and fever that appeared from ten days. She was agitated with neck stiffness. Her initial Glasgow coma scale was thirteen. The CT scan of the head showed a brain temporal abscess (A). The cerebral spinal fluid examination showed elevated proteinorrachia of 172 mg/dl, normal glycorrachia and lymphocytic pleocytosis (76% of 340 WBC/mm³). The Magnetic resonance imaging (MRI) of the head performed in the second day revealed images of hydrocephalus (B). It showed also two images of brain vermian (C) and temporal abscesses (D). The diagnosis of tuberculous encephalitis was made by computing clinical, laboratory and imaging findings. She was admitted in the intensive care unit and treatment by cefotaxim and acyclovir was initiated. Antituberculous drugs were added at the second day of management after MRI. In the sixth day of management, the patient became comatose and required intubation and mechanical ventilation. She died three days later from neurologic complications.

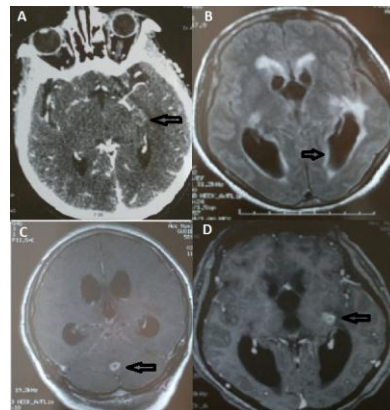


Figure 1: Brain imaging signs of tuberculous meningoencephalitis: CT scan and MRI: A) temporal abscess in brain CT scan after injection of contrast; B) dilated ventricles (hydrocephalus) in magnetic resonance imaging (MRI); C) vermian abscess in MRI T1 weighted; D) temporal abscess in MRI T1 weighted